

★ SHEAR RELIEF VALVES ★

100% Interchangeable with DEMCO[®]

Engineered For High Performance...

**Catalog
ORV 2" & 3"**



2"



3"

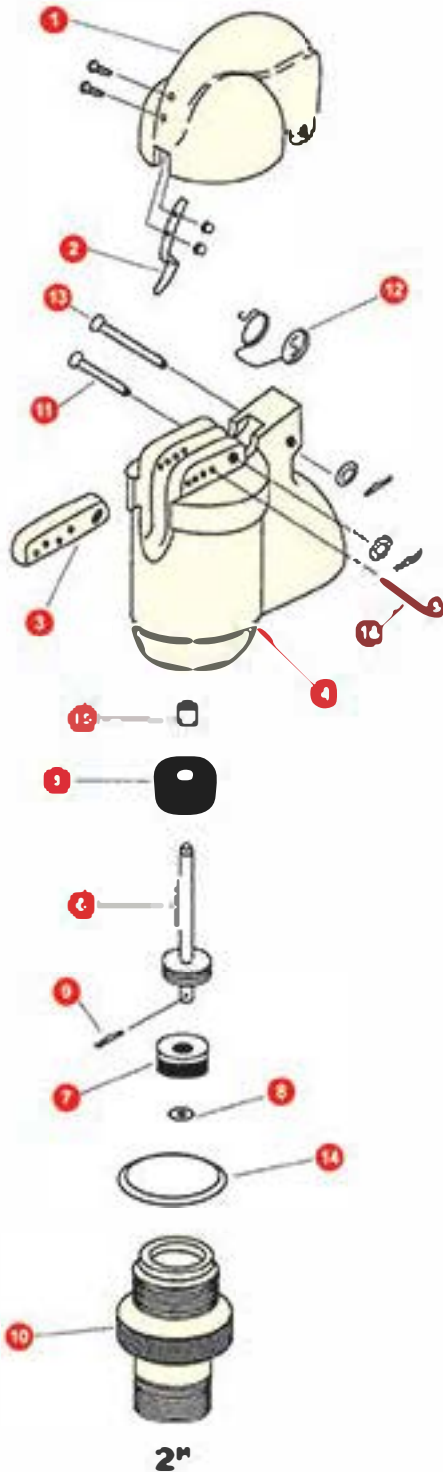
**DEMCO[®]
TYPE**

We Sell for Less..... !!!



2" O'DRILL SHEAR RELIEF VALVES

100% Interchangeable with OEMCO™



Ref. No.	MATERIAL & DESCRIPTION	PRESSURE & SIZE		
		2" 1000	2" 2750	2" 5000
1	COVER ALUM.	2368		
2	LATCH SPRING W/SCREWS & NUTS	1720		
3	SHEAR BAR SST-17.4 PH	17064	17065	
4	BODY	17063-002	17062-002	
5	CUSHION BUNA-N	2372		
6	STEM SST-17.4 PH	1927-000	1238-000	2373-003
7	SEAL BUNA-N	2929	1240	1568
8	WASHER SST-18-8	5804-0131316		
9	COTTER PIN SST	5421-09312		
10	SUB STEEL-C12 13	12379-002	2930-002	2374-002
	SUB SST303	12379-000	2930-003	2374-003
11	PIN, SHEAR BAR STEEL-4140	5418-37517		
12	COVER SPRING SPRING STEEL	2375		
13	PIN, COVER STEEL-4140	5418-37537		
14	GASKET COPPER	2931		
15	BUSHING BRONZE	17027		
16	SHEAR PIN KIT CONTROLLED STEEL WIRE (COLOR)	17458	17459	
		10 (#6)	10 (#10)	
		OLIVE	COPPER	

**Top Quality...Lowest Prices
GUARANTEED !!!**

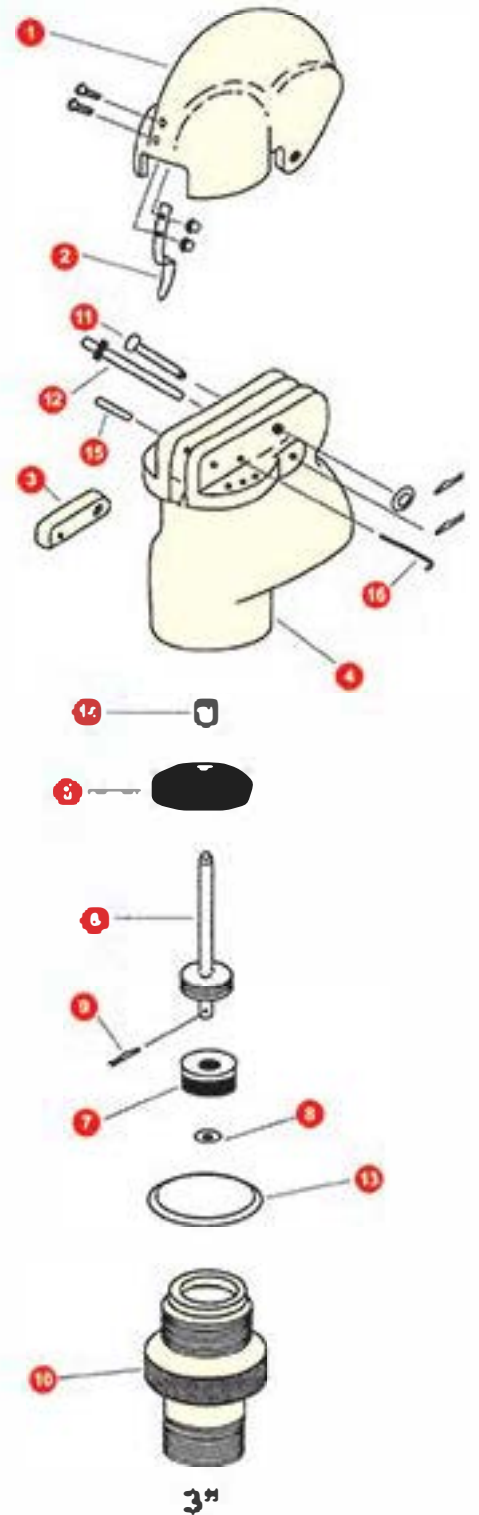


We've got the Quality...We've got the Price!!!

3" O'DRILL SHEAR RELIEF VALVES

100% Interchangeable with DEMCO®

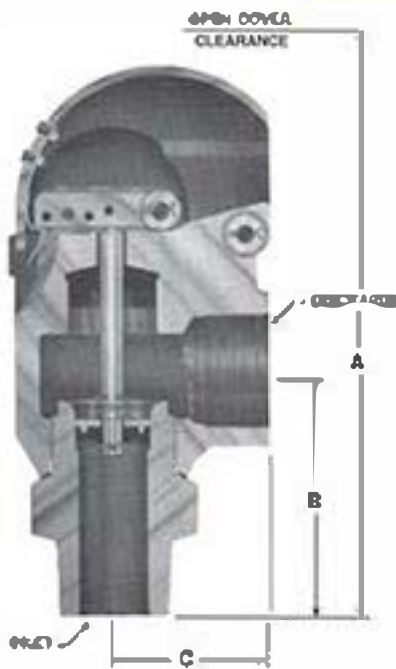
Ref. No.	MATERIAL & DESCRIPTION	PRESSURE & SIZE		
		3" 4000	3" 5000	3" 7500
1	COVER TEN Z. ALLOY	2937		
2	LATCH SPRING W/SCREWS & NUTS	1720		
3	SHEAR BAR 17-4 PH-SST	NEW PIN 17067 OLD PIN 2672		
4	BODY	2084		
5	CUSHION BUNA-N	2939		
6	STEM 17-4 PH-SST	2942	1622	1623
7	SEAL BUNA-N	2945	1242	1243
8	WASHER SST-18.8	5884-0191913		
9	COTTER PIN	5421-09312		
10	SUB C1213 STEEL	2952	2953	NA
	SUB 303 SST	2949	2950	2951
11	PIN, SHEAR BAR STEEL-4140	NEW PIN 5418-37527 OLD PIN 5418-43735		
12	PIN COVER STEEL-4140	2093		
13	GASKET COPPER	2954		
14	BUSHING BRONZE	17028		
15	SPRING PIN	5418-25025		
16	SHEAR PIN W/IT CONTROLLED STEEL WIRE	2955		
	COLOR	INCLUDES 100 OF EA. SIZE		
	BLACK	2955-30		
	YELLOW	2955-40		
	SILVER	2955-90		
	COPPER	2955-00		





Warranty: O'Drill / MCM warrants its Drilling Equipment Products to be free from defects in material and workmanship under normal use and service for a period of one (1) year from date of purchase. The liability for any such defects shall be limited to the repair or replacement of such drilling equipment products, or if agreed upon, refund of the purchase price in exchange for the product.

VALVE PRESSURE SETTINGS



VALVE SIZE	SHEAR PIN NUMBER (ONE ONLY)	SETTINGS (PSI)
2" -1000	#6	400, 600, 800, 1000
	#10	1250, 1750, 2250, 2750
	#10	2300, 3200, 4100, 5000
3" -2000	#30	2400
	#40	3100
	#50	3600
	#60	4000
3" -6000	#30	2800
	#40	3300
	#50	4100
	#60	5000
3" -7500	#30	5000
	#40	5400
	#50	6120
	#60	6750

ASSEMBLY PART NUMBER

PRESSURE SERIES

- 10-1000
- 20-2000
- 27-2750
- 40-4000
- 50-5000
- 75-7500

BODY MATERIAL - 2-Steel

STEM MATERIAL - 3-SS

SUB MATERIAL - 2-Steel, 3-SS

USE PART NO.

2" -1000 2056 - XX X 3 X
 2" -2750 1735 -
 2" -5000 1735 -
 3" -2000 2404 -
 3" -4000 2404 -
 3" -6000 2404 -
 3" -7500 3750 -

The C_v values below can be used in the following:

SIZE	2" -1000 -2750 -5000	3" -2000 -4000 -7500
A	1F	15-38
B	4-3/4	6-7/8
C	3-3/8	4-5/8
Weight	2 APT LP	3 APT LP
Weight	25 Lbs.	35 Lbs.

VALVE SIZE	C _v
2" -1000	92
2" -2750	52
2" -5000	28
3" -2000	121
3" -4000	68
3" -6000	58

SHEAR PIN NUMBER	PIN DIAMETER (IN) ± .002
#6	.1130
#10	.1483
#30	.2070
#40	.2253
#50	.2437
#60	.2625

$$C_v = C \sqrt{\frac{10(D_{34})}{D}}$$

$$10 = \left(\frac{Q}{C_v}\right)^2 \frac{V}{(D_{34})}$$

- D = Outside dia. of the flow pipe
- 10 = Pounds per square inch pressure drop across the valve
- Q = Orifice of fluid in pounds per gallon

- 150,000 square ft of modern manufacturing facility on 10.5 acres